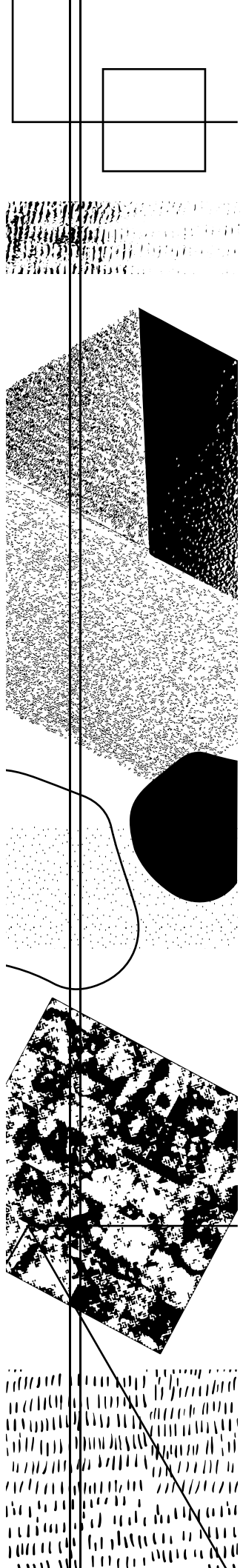


Bonbon Vedononvedo

DECORATORI®
BASSANESI

ITALIA ■ 1988



Designer



Paola Navone

Italy

Clients:

Abet Laminati, Alessi, Armani Casa, Baxter, Cappellini, Driade, Gervasoni, Habitat, Knoll, Poltrona Frau

Collections:

Bonbon, Vedononvedo

Bio:

^{IT} Schietta, sognatrice, eclettica: nella sua anima convivono sapori e colori del sud del mondo, conosciuto, amato, frequentato, unite al gusto e alle forme dell'Occidente ricco di tradizioni, aperto, in movimento. Da tutto ciò, la sua inesauribile curiosità alla ricerca di materie, forme e strutture, al presente, passato e futuro. È architetto, designer, art director, interior designer. Moltissime le mostre e gli allestimenti curati in tutto il mondo. Nell '83 vince l'International Design Award di Osaka, nel 2000 è Designer dell'anno per la rivista tedesca Architektur & Wohnen e nel 2011 vince con 2 progetti l'Elle Deco International Design Awards. Nel 2014 riceve dalla rivista Interior Design Magazine la prestigiosa nomina a far parte della Hall of Fame del Design. Vanta collaborazioni con le firme più illustri dello scenario internazionale del mondo del design come Branzi, Sottsass, Mendini.

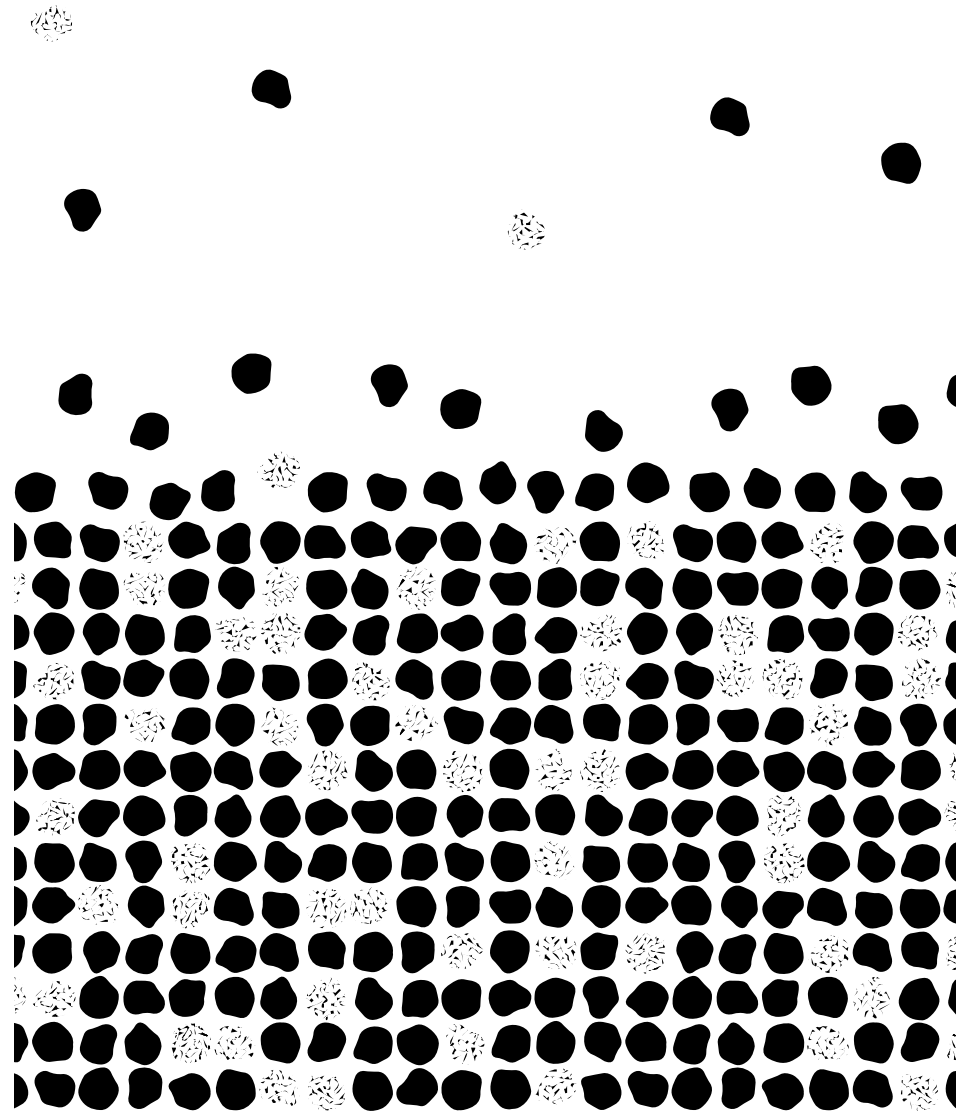
^{EN} An open and eclectic dreamer: the flavours and colours of the global South that she knows and loves live in her mind and soul, in harmony with the taste and forms of the Western world and its rich traditions – open and in motion. All of this is the basis for the unquenchable curiosity of her constant search for materials, forms and structures, in the past, present and future. She is an architect, designer, art director and interior decorator. She has curated numerous exhibitions and shows throughout the world: in 1983 she won the International Design Award in Osaka, and in 2000 she was named Designer of the Year by the German magazine, Architektur & Wohnen. In 2011 two of her projects won the Elle Deco International Design Awards, and in 2014 she was nominated to the prestigious Design Hall of Fame by Interior Design Magazine. She has worked with some of the most famous design companies on the international scene, including Branzi, Sottsass and Mendini.

Bonbon

Design:
Paola Navone

Anno:
2016
Destra:
Bonbon Aquamarine /
White | Ardesia | Aquamarine,
dettaglio della superficie

Year:
2016
Right:
Bonbon Aquamarine /
White | Ardesia | Aquamarine,
surface detail







▮ Pastiglie di forme irregolari, dai colori tenui e polverosi, formano un inedito mosaico. Paola Navone disegna una collezione delicata e morbida nelle linee, ma dalla forte personalità, che sa essere ironica e divertente, rimanendo sempre stilosa. In versione tinta unita richiama al fascino poetico dei rivestimenti senza tempo. In versione mélange gioca con colori e forme, per effetti inaspettati.

▮ Irregular shapes like old-fashioned sugar candies in dusty pastel colours create a unique mosaic. Paola Navone has designed a delicate collection built on soft lines and a strong personality. Always stylish, it never lacks a touch of humour and whimsy. In its monochrome version it recalls the timeless poetic elegance of classic wall coverings. Its multicolour variation plays with colours and forms to create unexpected effects.

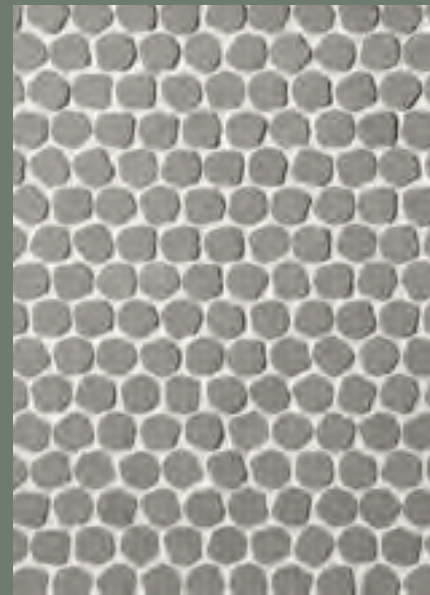




White



Aquamarine



Ardesia



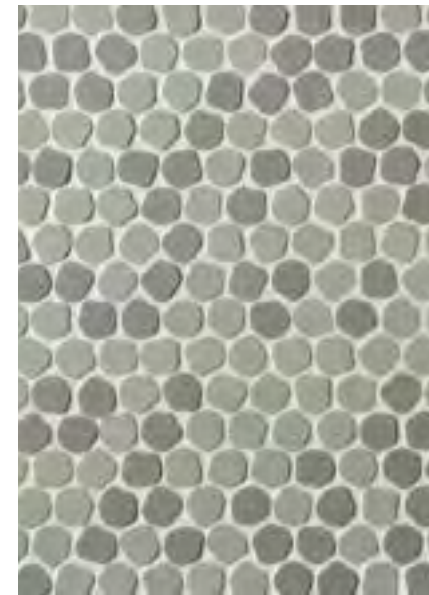
Smoke



Ardesia | White



White | Ardesia | Smoke



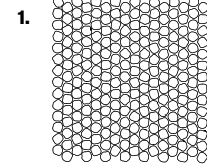
Ardesia | Aquamarine



White | Ardesia | Aquamarine

Bonbon

Spessore ^{EN} Thickness:
5 mm



1. 30,5x30,5 cm

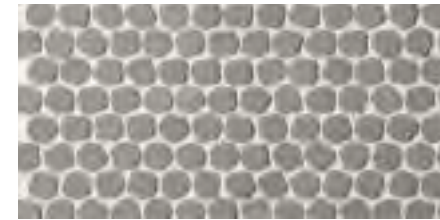
Finitura Finish	Dimensione Size	Codice Code
White	30,5x30,5 cm	BONBONWH
Aquamarine	30,5x30,5 cm	BONBONAQ
Ardesia	30,5x30,5 cm	BONBONAR
Smoke	30,5x30,5 cm	BONBONSM
Ardesia White	30,5x30,5 cm	BONBONMIXA
Aquamarine Ardesia	30,5x30,5 cm	BONBONMIXB
White Ardesia Smoke	30,5x30,5 cm	BONBONMIXC
White Ardesia Aquamarine	30,5x30,5 cm	BONBONMIXD



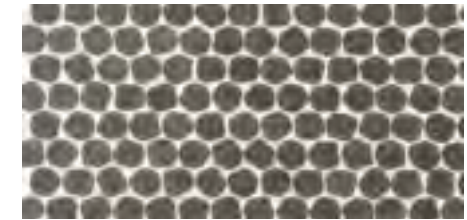
White



Aquamarine



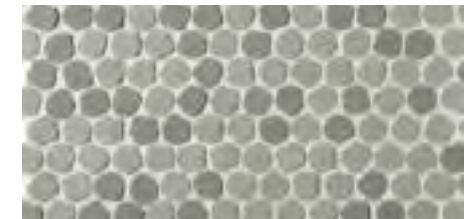
Ardesia



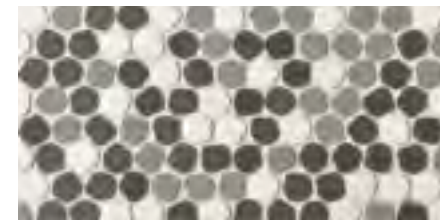
Smoke



Ardesia | White



Aquamarine | Ardesia



White | Ardesia | Smoke



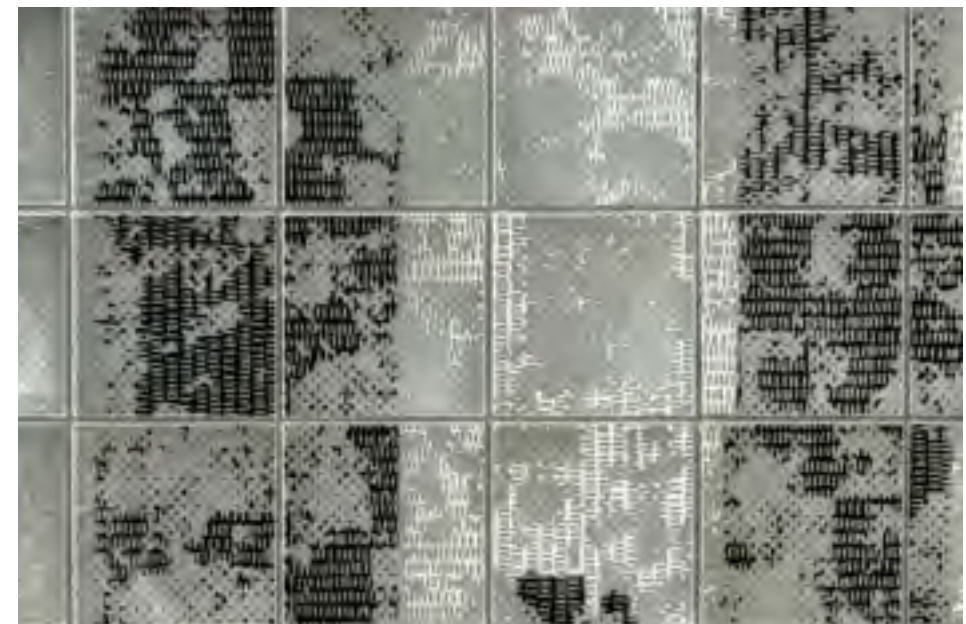
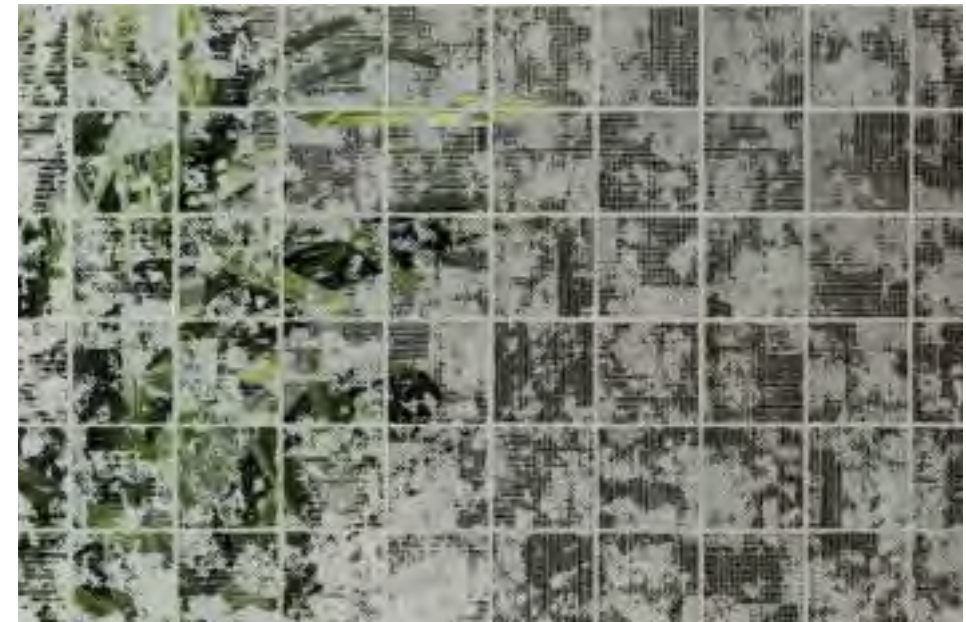
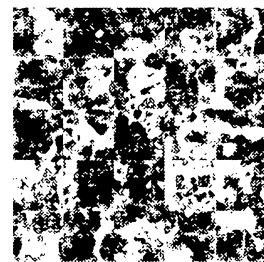
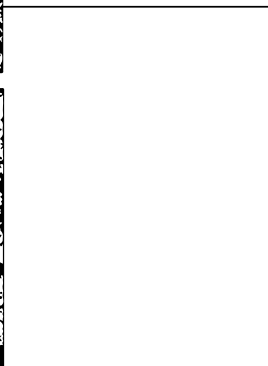
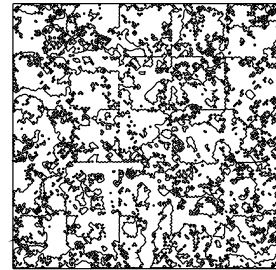
White | Ardesia | Aquamarine

Vedononvedo

Design:
Paola Navone

Anno:
2015
Destra:
Vedononvedo,
dettaglio della superficie

Year:
2015
Right:
Vedononvedo,
surface detail







□ Riflessi di luce e raffinate suggestioni, grazie all'utilizzo di elementi specchiati, che sono stati graffiati e sabbiati con sapienza. Paola Navone utilizza un decoro astratto sulla superficie riflettente, per creare un affascinante effetto vedo non vedo. Eleganti pareti dal forte impatto visivo sono il risultato di questo dialogo tra luce e materia.

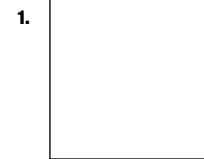
EN Reflections of light and refined, evocative shapes grow out of the use of mirrored elements that have been carefully etched and partially obscured. For this collection, Paola Navone has created an abstract pattern on top of a reflective surface to create a fascinating semi-translucent mirror effect. The result of this dialogue between light and material is an elegant wall with a strong visual impact.



Vedononvedo

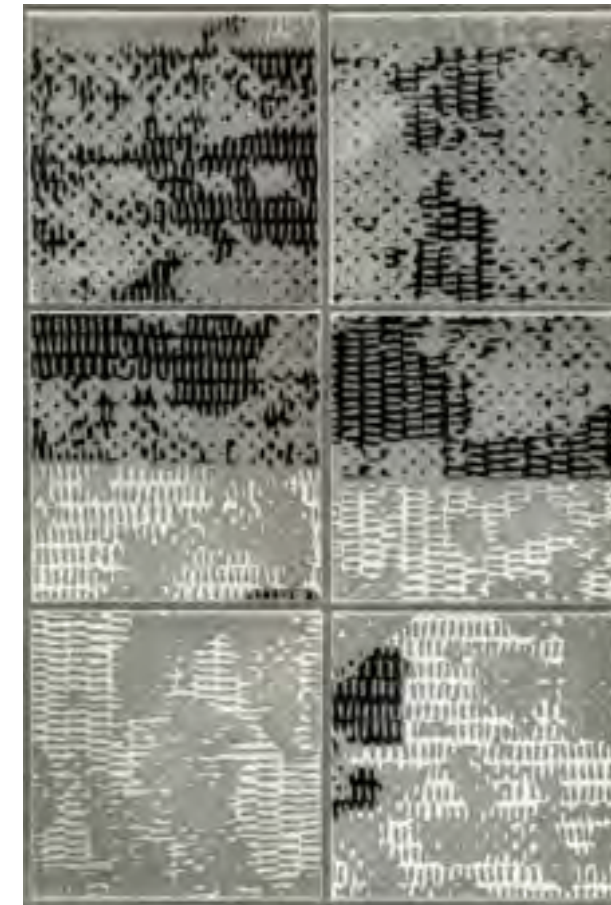
▮ Spessore ▮ Thickness:
5 mm

▮ Fuga minima consigliata
▮ Minimum recommended grout line
2 mm



1. 10x10 cm

Finitura Finish	Dimensione Size	Codice Code
Vedononvedo	10x10 cm	VEDONONVEDO



Vedononvedo

Decoratori Bassanesi srl

Sede operativa - Via Vallina Orticella, 48 | 31030 Borso del Grappa (TV)

Sede legale - Largo Perlasca, 19 | 36061 Bassano del Grappa (VI)

+39 0423 910076 | info@decoratoribassanesi.it

www.decoratoribassanesi.it